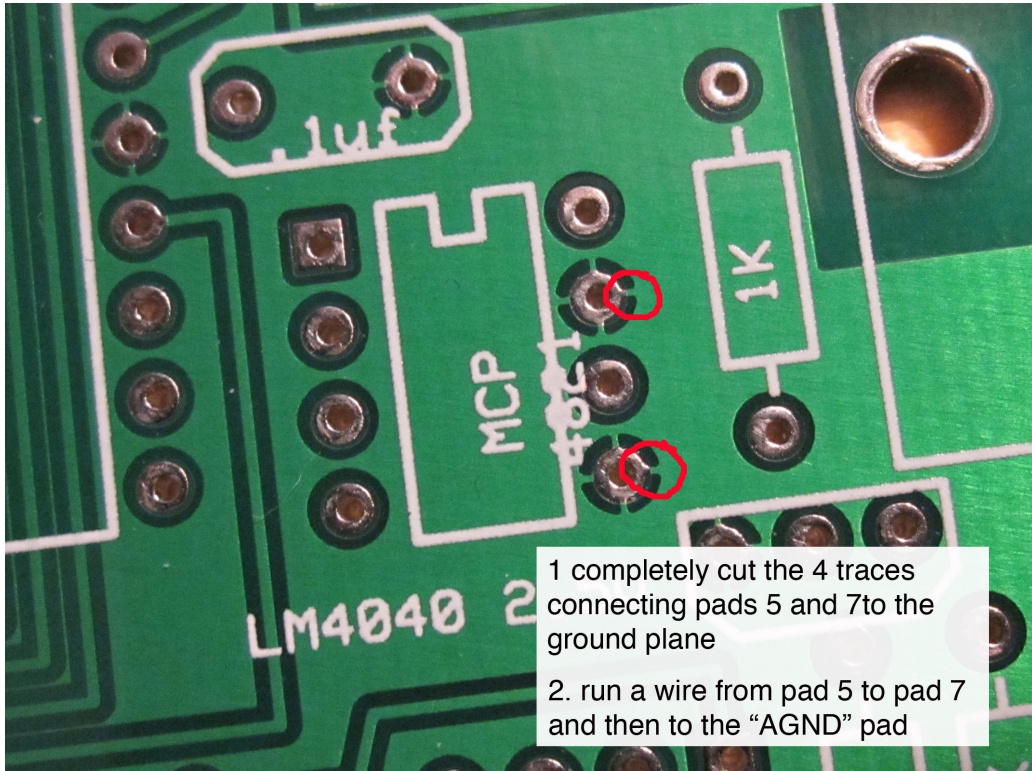
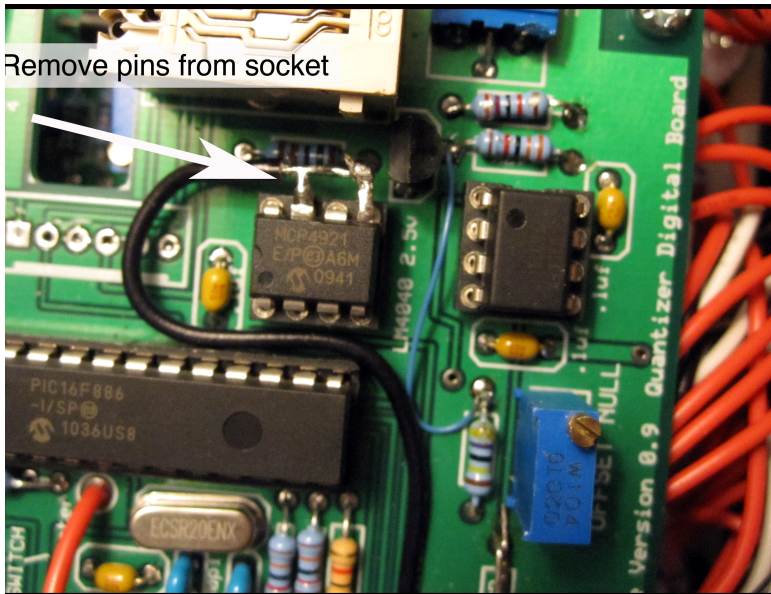


DAC Analog Ground FIX - Do ONE of the 2 Fixes ONLY



Fix Version 1

1. Locate the MCP 4921 on the DIGITAL BOARD
2. Cut the 4 traces connecting PINS 5 and 7 to the ground plane.
3. MAKE SURE THE PINS ARE COMPLETELY ISOLATED FROM THE DIGITAL GROUND
4. On the underside of the board run a wire connecting PIN 5 to PIN 7. Then run a wire from PIN 7 to the pad AGND in the lower left corner of the DIGITAL BOARD



Fix Version 2

1. Insert the MCP4921 so that PIN 5 and 7 are outside the IC socket.
2. Solder a wire directly to Pin 5, then to PIN 7 of the IC
3. Run the wire to the PAD "AGND" in the lower left of the DIGITAL BOARD and solder the other end to the pad

